

PART OF N.W. 1/4 OF SECTION 22, T.5N., R.1W., S.L.B.&M.
MAIN POINT SOUTH SUBDIVISION
 LOTS 30 TO 37, 43 TO 52 & 68 TO 76

112

TAXING UNIT: 27

IN SOUTH OGDEN CITY

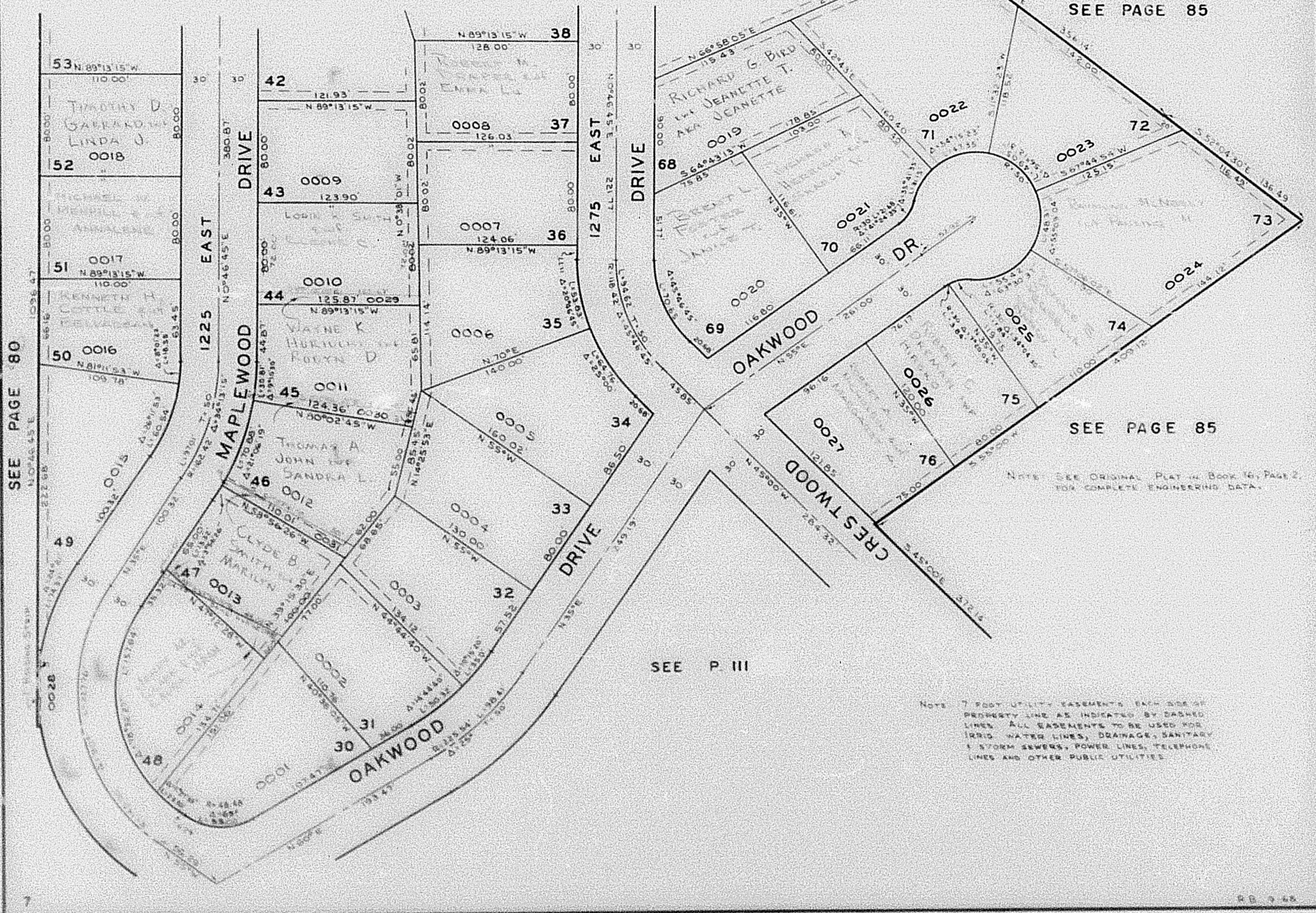
PREFIX: 07-112

SCALE 1" = 60'

EXCEPT WHERE OTHERWISE SHOWN,
 ALL LOTS ARE OWNED BY:
 ROBERT H. HINCKLEY, INC.

SEE P. 113

SEE PAGE 85



NOTE: SEE ORIGINAL PLAT IN BOOK 16, PAGE 2 FOR COMPLETE ENGINEERING DATA.

NOTE: 7 FOOT UTILITY EASEMENTS EACH SIDE OF PROPERTY LINE AS INDICATED BY DASHED LINES. ALL EASEMENTS TO BE USED FOR IRRIG., WATER LINES, DRAINAGE, SANITARY & STORM SEWERS, POWER LINES, TELEPHONE LINES AND OTHER PUBLIC UTILITIES.